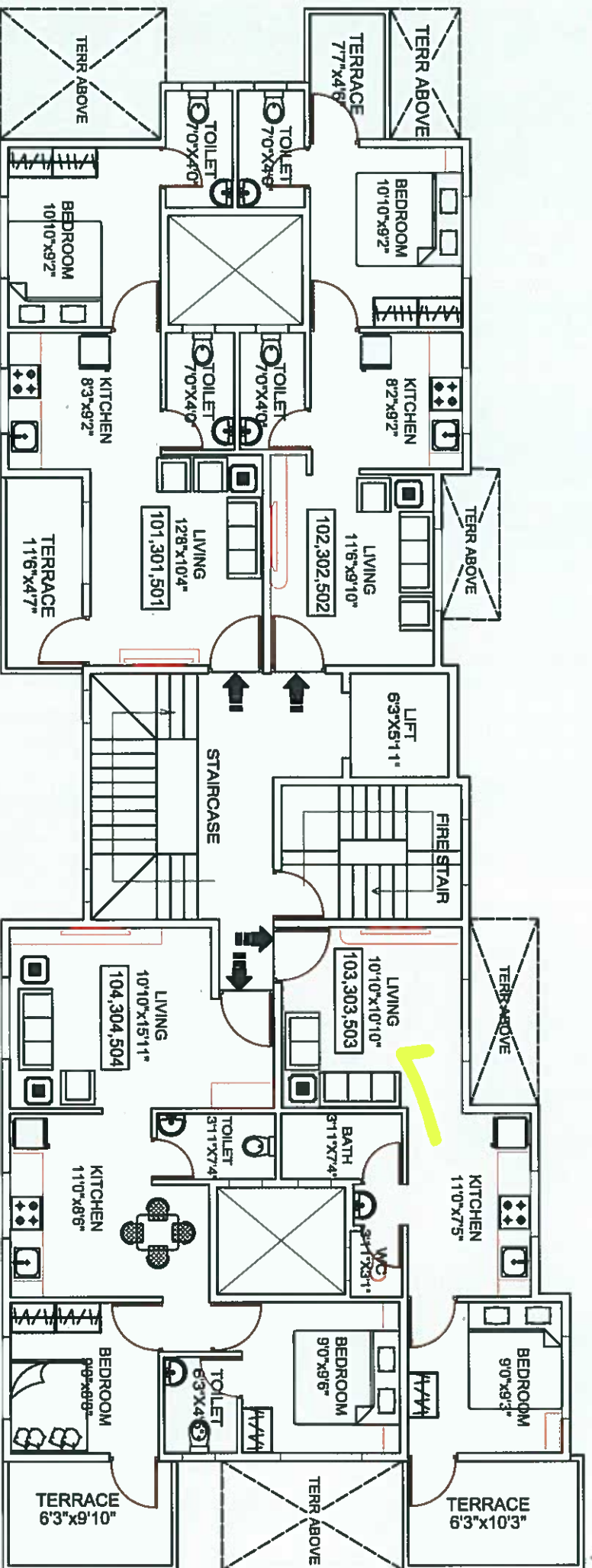


# विश्वाशान्ति

VISHWASHANTI

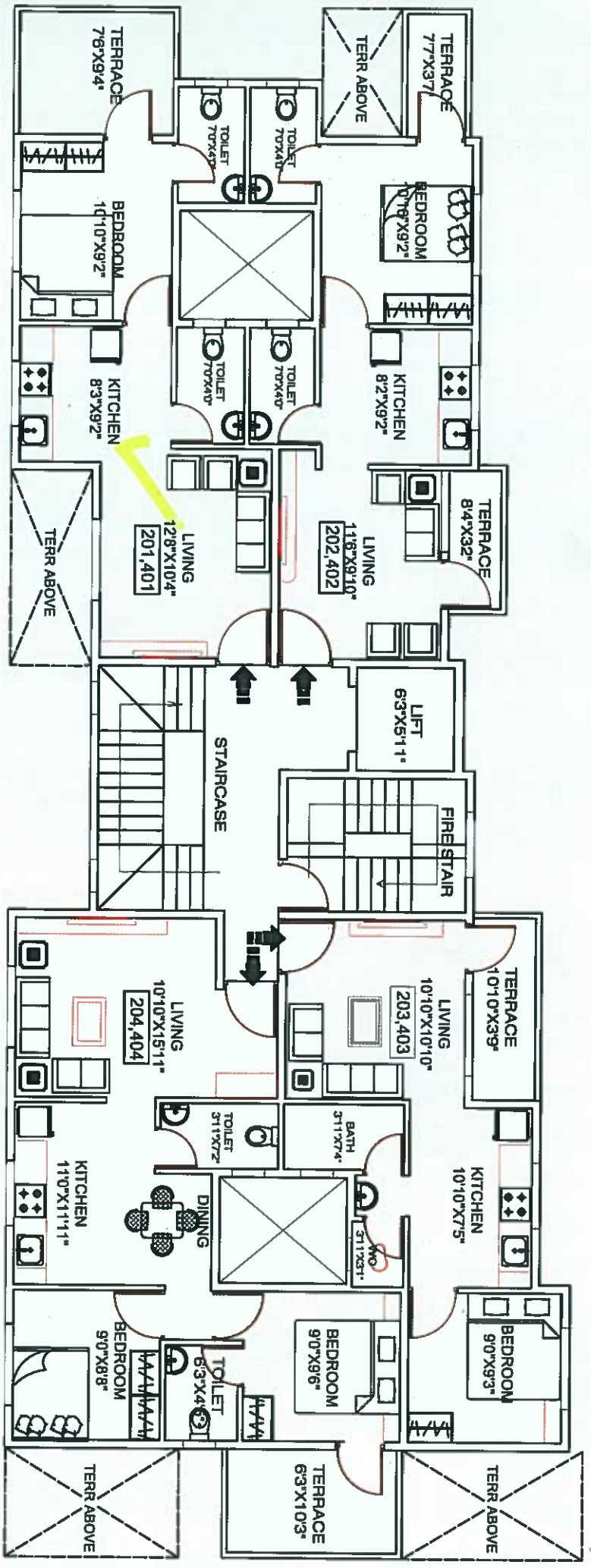


# 1ST, 3RD, 5TH FLOOR PLAN



FLAT NO.	TYPE	CARPET AREA		B/UP AREA
		FLAT	TERRACE	
101, 301, 501	1BHK	363 SQ.FT.	53 SQ.FT.	541 SQ.FT.
102, 302, 502	1BHK	351 SQ.FT.	34 SQ.FT.	501 SQ.FT.
103, 303, 503	1BHK	337 SQ.FT.	64 SQ.FT.	521 SQ.FT.

# 2ND, 4TH FLOOR PLAN



FLAT NO.	TYPE	CARPET AREA		B/UP AREA
		FLAT	TERRACE	
201, 401	1BHK	363 SQ.FT.	70 SQ.FT.	563 SQ.FT.
202, 402	1BHK	352 SQ.FT.	54 SQ.FT.	528 SQ.FT.
203, 403	1BHK	336 SQ.FT.	42 SQ.FT.	491 SQ.FT.

#### [A] COMMON AMENITIES

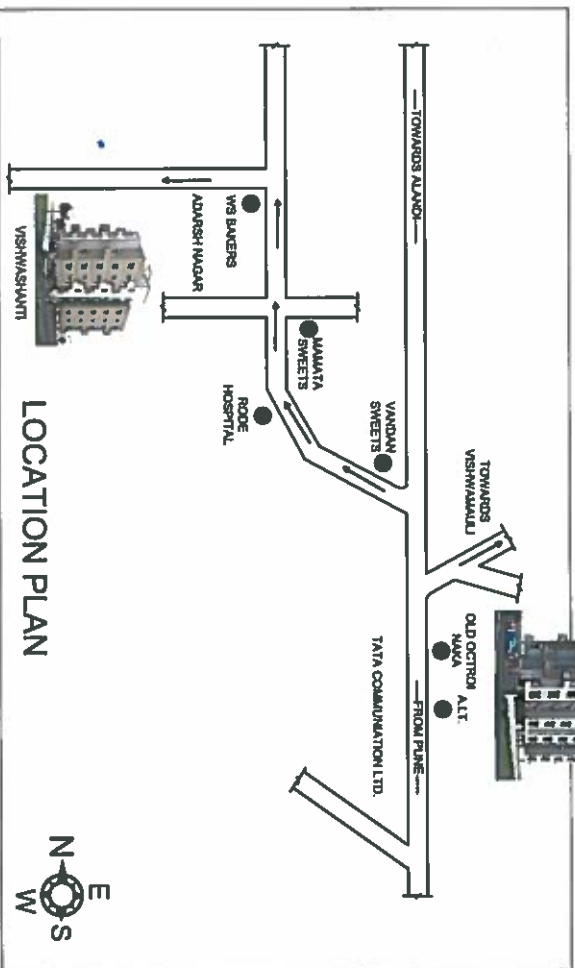
- 100% Generator Back up for Common Areas.
- Concrete Internal Roads.
- Provision for Inverter

#### [B] STRUCTURE :

- RCC Frame Structure designed for seismic load as per Basic IS Code.
- Underground and Overhead RCC Water tanks with water level controller.
- All internal & external walls are of 4" & 6" Bricks.
- All external wall of sand faced cement plaster. Internal Wall of sanla finish.

#### [C] DOORS AND WINDOWS

- Elegant main door with Laminate on both sides.
- All Internal Doors will be Flush Doors with Laminate on both sides.
- All toilets doors will be Waterproof Flush Doors with Laminate on both sides with Green Marble Stone Frame.
- Powder coated Aluminium windows
- Green Marble Window Sill



#### [D] ELECTRICAL

- Concealed fire resistant high quality copper wiring.
- Adequate Light points with good quality modular switches.
- Earth leakage circuit breaker along with M. C. B. and distribution Board.
- Single Phase Electricity Meter for each home.
- T. V. & Telephone points in living room and master bed room

#### [E] DRY BALCONIES

- Provision for washing machine.

#### [F] KITCHEN

- 8' long kitchen platform of Granite Stone with S. S. Sink.
- Ceramic tiles up to 3' above kitchen platform
- Provision for Water Purifier.
- Provision for Exhaust Fan.
- Attached Terraces with Antiskid Tile Flooring.

#### [G] PAINTING

- All Interiors will be finished with Oil Bound Distemper Paint.
- Good quality cement paint for exteriors.

#### [H] FLOORING

- 2' x 2' flooring in all rooms with skirting.
- Anti skid ceramic tile flooring in Toilets & attached Terraces

#### [I] TOILETS

- Ceramic Tile dado up to 7' height.
- Sanitary ware of good quality.
- CP fittings for each toilet.
- Concealed plumbing
- Master cock for each toilet
- Provision for Exhaust fan
- Provision for Boiler.

# GREEN AMENITIES

Solar Water Heating System.

Rain Water Recycling



A One Capital, 1206/B, Shivaji nagar,  
Apte Road, Pune 411004.  
Phone : 7709873626, 9423091606, 8806312060  
E-mail- vishwatamakassociates@gmail.com



Site Address:  
**VISHWATAMAK ASSOCIATES**  
Vishwashanti, S. No. 74/1/5 & 6,  
Adarsha Nagar, Dighi, Tal. - Haveli, Pune